

LONGWOOD

SOFTBALL

2017 Schedule

Carolina Classic - Columbia, S.C.

F 10	vs. Ohio ^	L, 5-0
F 11	vs. Charlotte ^	L, 2-1
F 11	at South Carolina (RV) ^ / SECN+	L, 1-0 (9)
F 12	vs. Ohio	L, 5-0

Troy Tournament - Troy, Ala.

F 17	vs. Samford#	L, 8-5
F 17	at Troy #	L, 5-4
F 18	vs. Jacksonville #	W, 3-1
F 18	at Troy #	L, 9-3
F 19	vs. Samford #	W, 3-2 (8)

UNCG Invitational - Greensboro, N.C.

F 25	vs. George Washington !	W, 4-3
F 25	at UNCG !	L, 7-2
F 26	vs. George Washington !	W, 11-2
F 26	at UNCG !	W, 4-0

M 4	HOFSTRA	L, 4-1
M 4	HOFSTRA	L, 9-7
M 5	HOFSTRA	W, 2-0

Louisville Slugger Invitational - Long Beach & Fullerton, Calif.

M 10	vs. Eastern Michigan &	W, 8-1
M 10	vs. UCLA &	L, 8-0 (5)
M 11	vs. San Diego State @	L, 5-1
M 11	at Cal State Fullerton @	L, 2-1
M 12	vs. Harvard &	L, 3-2

M 18	at *Campbell	W, 7-6 (10)
M 18	at *Campbell	L, 10-9
M 19	at *Campbell	L, 9-2
M 22	TOWSON	W, 5-4
M 22	TOWSON	W, 8-2
M 28	VIRGINIA	W, 1-0
M 28	Virginia	W, 2-1
M 31	at *Winthrop	L, 1-0

A 1	*at Winthrop	L, 5-4
A 1	*at Winthrop	L, 3-2
A 4	at North Carolina	L, 5-3
A 8	*GARDNER-WEBB	W, 8-0 (6)
A 8	*GARDNER-WEBB	W, 8-0 (6)
A 9	*GARDNER-WEBB	W, 4-0
A 11	*at Virginia Tech	L, 5-2
A 14	*PRESBYTERIAN	W, 2-0
A 14	*PRESBYTERIAN	L, 2-0
A 15	*PRESBYTERIAN	L, 4-0
A 19	EAST CAROLINA	L, 8-0 (5)
A 19	EAST CAROLINA	L, 7-4
A 21	*CHARLESTON SOUTHERN (DH)	3 p.m.
A 22	*CHARLESTON SOUTHERN	1 p.m.
A 25	at *Liberty (DH)	5 p.m.
A 26	at *Liberty	5 p.m.
A 28	at *Radford	7 p.m.
A 29	at *Radford (DH)	1 p.m.

M 10-13 BIG SOUTH TOURNAMENT % TBA

Home games in **BOLD CAPS**
 *Big South Game
 ^ Game played in Columbia, S.C.
 # Troy Invitational
 ! Game played in Greensboro, N.C.
 & Louisville Slugger Inv. game played in Long Beach, Calif.
 @ Louisville Slugger Inv. game played in Fullerton, Calif.
 % Big South Championship -- Farmville, Va.
 All times Eastern and subject to change

vs. Charleston Southern

April 21, 2017 • 3 p.m. DH | April 22, 2017 • 12 p.m.
 Farmville, Va. • Lancer Field
 Big South Network (Friday Only)

THE MATCHUP

Longwood Lancers (16-25, 5-7 Big South)

Head Coach: Kathy Riley
Riley's Record: 713-430-1 (24th year)
-- At Longwood: 634-363-1 (20th year)
Current Streak: L 4
Last Game L, 7-4 vs. East Carolina
2016 Record / Postseason 40-20 / NCAA Regional



Charleston Sou. Buccaneers (23-30, 7-8 Big South)

Head Coach: Shane Winkler
Winkler's Record: 232-287-2 (Eighth Season)
-- At Charleston Southern: Same
Current Streak: L 2
Last Game L, 7-1 vs. South Carolina
2016 Record / Postseason 22-34 / None



Leading Off

- Longwood completes its home regular season schedule with a weekend series against Charleston Southern. The games have been moved to a Friday doubleheader and Saturday single game.
- Saturday's will mark the final regular season game for seniors **Justina Augustine**, **Jenna Carnes** and **Elizabeth McCarthy**. Those three seniors have been part of two 40-win seasons and two Big South Championship teams.
- Senior **Elizabeth McCarthy** was named Big South Pitcher of the Week last Monday after tossing 10 shutout innings over the weekend against Gardner-Webb, including a no-hitter Saturday.
- McCarthy enters the weekend eighth-place all-time on the Big South's career strikeout list. She has 605 for her career, which is a Longwood school record. In addition, the southpaw is third all-time on Longwood's all-time win charts.

THE LINEUP

THE PITCHERS

Pos.	Name	W-L	ERA	IP	K's	Notables
RHP	Jenna Carnes	0-1	7.00	7.0	5	Second-most experienced pitcher on roster
RHP	Sydney Gay	10-12	2.46	145.0	108	Third in the Big South with a 2.48 ERA
LHP	Elizabeth McCarthy	6-8	3.16	86.1	77	Longwood's all-time K leader, ranks eighth in Big South
RHP	Sydney Mundell	0-2	3.26	34.1	14	Has made 14 appearances with one start

PROJECTED BATTING ORDER

Pos.	Name	GP-GS	Avg.	Runs	RBI	Notables
SS	Justina Augustine	41-41	.256	12	7	2015 First-team All-Big South
C	Kaylynn Batten	41-41	.283	16	18	Earned Big South Player of the Week honors earlier in season
1B	Karleigh Donovan	39-39	.263	14	12	One of four Lancers to start all 36 games
CF	Jordan Clark	36-34	.283	7	19	Currently riding an eight-game reached base streak
LF	Glenn Walters	36-33	.203	18	12	2016 Big South All-Tournament Team
3B	Krista Kelly	41-41	.192	16	15	Has played at eight different positions in career
RF	Jessica Smith	30-22	.214	13	7	Defensive specialist; had breakout 2016 Big South Tourney
2B	Destiny Martinez	34-32	.205	11	1	Defensive specialist; slap hitter
DP	Kasey Carr	33-32	.159	9	4	Has started 30 games at shortstop on the season

LAST TIME OUT

- East Carolina used a couple of big fifth innings to earn a pair of wins in a doubleheader sweep over the Longwood softball team Wednesday night at Lancer Field.
- The Pirates sent 10 batters to the plate in a seven-run inning en route to an 8-0 win in five innings, before scoring five runs in the fifth inning of game two in a 7-4 win.
- Senior southpaw Elizabeth McCarthy (16-24) took the loss in game one, as she pitched seven innings across the two games and gave up eight runs, six earned, on eight hits and three walks. Ranked eighth-place among the Big South strikeout leaders, McCarthy added three strikeouts in the pair of games.
- Jordan Clark was the lone Lancer to record multiple hits throughout the day, with both of those hits coming in the first game. Five different Lancers – Justina Augustine, Kaylynn Batten, Krista Kelly, Jessica Smith and Destiny Martinez – had one hit apiece in the doubleheader.

SCOUTING THE BUCCANEERS

- Longwood will face its second straight power-hitting team over the weekend when Charleston Southern comes to town. Charleston Southern ranks among the top-five in the nation with 59 home runs, more than double the next closest Big South team.
- The Buccaneers come into the weekend 7-8 in Big South competition and fourth-place in the Big South standings.
- Charleston Southern has three players batting above the .300 mark, including Jade Gandara (.370), Stevi Johnson (.363) and speedster Amanda Matsumoto (.313).
- In the circle, three different Buccaneers eat the majority of the innings with Cheyenne Gandara posting a 3.02 ERA in 120.2 innings on the season.

LANCER STREAKS

- Nine different Lancers reached base in Longwood's doubleheader against Presbyterian. Here are the Lancer Streaks heading into the weekend.

Current Reached Base Streaks

Player	Streak
Justina Augustine.....	1
Kaylynn Batten.....	1
Karleigh Donovan.....	1
Destiny Martinez.....	1
Krista Kelly.....	1
Jessica Smith.....	1
Leanna Toler.....	1
Glenn Walters.....	1

Current Hitting Streaks

Player	Streak
Justina Augustine.....	1
Kaylynn Batten.....	1
Karleigh Donovan.....	1
Destiny Martinez.....	1
Krista Kelly.....	1
Jessica Smith.....	1

BIG SOUTH DOMINANCE

- In its fifth season in the Big South, Longwood has been dominant in its first four seasons in the league. The Lancers have won 28 of 36 series against conference opponents.
- Longwood has swept 17 of the three-game series it has played among conference foes, while accumulating a 75-28 regular season record since joining the league.
- The lone team that has posted a winning record during the regular season is Coastal Carolina, who moved to the Sun Belt prior to the 2016-17 academic year. Winthrop is the only current Big South program to earn a series sweep against Longwood.

Records Against BSC Opponents Since 2013

Campbell.....	11-7
Coastal Carolina.....	8-9
Charleston Southern.....	11-4
Gardner-Webb.....	17-0
Liberty.....	10-3
Presbyterian.....	12-6
Radford.....	13-0
Winthrop.....	13-6
TOTALS.....	91-33

*Includes Postseason Records Since Joining BSC

**Coastal Carolina No Longer Member of Big South

AMONG THE BEST IN THE NATION

- Longwood has achieved elite status and has become one of the more dominant non-Power Five softball programs in the nation since the start of the 2013 season.
- Since 2013, Longwood has won 163 games with three 40-win seasons in 2013, 2014 and 2016. The 167 wins ranks 16th among non-Power-Five members in the nation in that time span.
- Longwood is one of just 38 teams across the nation to make the NCAA Tournament the last two seasons and the Lancers are one of seven non-Power Five programs to advance to the tournament in 2015 and 2016.
- Longwood is one of 13 mid-majors to make the tournament in three of the past four seasons.

Winningest Mid-Major Programs Since Start of 2013 Season

James Madison.....	222
Louisiana Lafayette.....	217
USC Upstate.....	211
Tulsa.....	202
South Florida.....	195
South Alabama.....	188
McNese State.....	187
UCF.....	183
Jacksonville State.....	183
Fordham.....	183
Florida Atlantic.....	180
Coastal Carolina.....	177
New Mexico State.....	173
Longwood.....	171
North Dakota State.....	171
Fresno State.....	169

*last updated April 20, 2017

School Record Watch

Elizabeth McCarthy - Career Wins

1. Briana Wells	96	2008-11
2. Jen Steele	73	2002-05
3. Elizabeth McCarthy	67	2014-pres
4. Jennifer Potts	64	2000-03
5. Libby Morris	61	2012-15
6. Rachel Mills	60	1993-96
7. Emily Welpott	42	1993-96

Elizabeth McCarthy - Career Strikeouts

1. Elizabeth McCarthy	605	2014-pres
2. Briana Wells	572	2008-11
3. Jen Steele	409	2002-05
4. Rachel Mills	331	2000-03
5. Libby Morris	327	2012-15
6. Emily Welpott	324	1993-96
7. Jennifer Potts	259	2000-03

Elizabeth McCarthy - Innings Pitched

1. Briana Wells	900.2	2008-11
2. Elizabeth McCarthy	671.0	2014-pres.
3. Jen Steele	625.2	2002-05
4. Libby Morris	619.2	2012-15
5. Rachel Mills	575.1	2000-03
6. Jennifer Potts	563.2	2000-03
7. Emily Welpott	529.1	1993-96

Glenn Walters - Career Walks

1. Megan Baltzell	166	2012-15
2. Emily Murphy	127	2013-16
2. Brooke Short	106	2010-13
3. Shelby Ray	81	2000-03
4. Glenn Walters	73	2015-pres.
5. Megan Camden	66	2002-05
6. Courtney Long	61	2009-12
7. Ryan Washington	59	2005-08

Big South Record Watch

Elizabeth McCarthy - Career Strikeouts

1. Sarah Pauly, TAMCC	1,372	2003-05
2. Ashley Taylor, Radford	842	2005-08
3. Lisa Kemme, Winthrop	809	1988-91
4. Kelli Johnson, Winthrop	805	2002-05
5. Michelle Hall, Coastal Caro.	738	1990-93
6. Breanna Felix, Radford	727	2004-07
7. Ashley Bagwell, Coastal Caro.	638	2011-14
8. Biz McCarthy, Longwood	605	2014-pres.
9. Kiana Quolas, Coastal Caro.	590	2012-15
10. Shahna Ashard, Winthrop	584	2003-06

Elizabeth McCarthy - Career Wins

1. Michelle Hall, Coastal Caro.	104	1990-93
2. Kiana Quolas, Coastal Caro.	91	2012-15
3. Lisa Kemme, Winthrop	90	1988-91
4. Sarah Pauly, TAMCC	87	2003-05
5. Kelli Johnson, Winthrop	86	2002-05
6. Ashley Taylor, Radford	84	2005-08
7. Jami Bendle, East Carolina	80	1996-98
8. Denise Reagan, East Caro.	77	1997-99
9. Breanna Felix, Radford	74	2004-07
10. Erin Chandler, UNCG	70	1993-96
Biz McCarthy, Longwood	67	2014-pres.

SENIOR CLASS CANDIDATE

- Longwood senior and back-to-back Big South Pitcher of the Year **Elizabeth McCarthy** has been selected as one of 30 candidates from across the country for the 2017 Senior CLASS Award® in collegiate softball.
- One of the most prestigious awards in college athletics, a student-athlete, to be considered as a candidate, must be classified as an NCAA Division I senior and have notable achievements in four areas of excellence: community, classroom, character and competition.
- Throughout her time at Longwood, McCarthy has served in a number of leadership positions off the softball field, serving for two years as the vice president for Longwood's Student Athletic Advisory Committee (SAAC). In that role, McCarthy planned and oversaw community service projects while collaborating with other members of the committee
- Throughout her time at Longwood, McCarthy has served in a number of leadership positions off the softball field, serving for two years as the vice president for Longwood's Student Athletic Advisory Committee (SAAC). In that role, McCarthy planned and oversaw community service projects while collaborating with other members of the committee
- McCarthy has also been involved throughout the community in her time at Longwood, as she's been involved in various organizations such as Project Life, Operation Christmas Child and Relay for Life. In addition, during her time on SAAC, McCarthy organized Longwood's efforts for Clothes/Coats/Shoes for Homeless Veterans.

RILEY COLLECTS WIN NO. 700

- Longwood head coach **Kathy Riley** picked-up her 700th career coaching victory in Longwood's 4-3 win over George Washington. Including her four seasons at Mount Olive prior to her arrival at Longwood, a Riley-coached team has not finished below the .500 mark since her first two seasons with the Trojans.
- Riley captured her 600th victory at Longwood during the 2016 season, as the Lancers picked up a doubleheader sweep over Virginia Tech at Lancer Field.
- In her 20th season as the head coach of the Lancers, Riley owns 623 victories. In her previous 19 seasons at Longwood, she has never posted a record below the .500 mark while winning 30-plus games in 12 of her 19 previous seasons to go along with a trio of 40-win campaigns.
- Riley has guided the Lancers to unparalleled success since joining the Division I ranks in 2008. In those seven full seasons, Longwood has captured the 2013, 2015 and 2016 Big South Championships, as well as the 2015 and 2016 Big South Regular Season Championship last season. The 2015 and 2016 Big South Coach of the Year, Riley guided the Lancers to the school's first NCAA Regional Championship game last season against JMU.

KELLY'S VERSATILITY

- Longwood's opening day shortstop **Krista Kelly** has become a versatile player for head coach Kathy Riley. While starting 54 of 57 games last season, Kelly started at four different positions in the field. In addition, the Maryland product also served as the DP in one game.
- Shortstop is the seventh different position that Kelly has seen playing time throughout her career. She played three games at the position at the season-opening Carolina Classic, before moving to center field in the tournament finale.
- Kelly learned the catching position throughout the fall 2015 and opened the 2016 season as Longwood's starting catcher. However, due to team needs, she moved to second base where she played nine contests.
- The junior received her first career start in the outfield in Longwood's 2-1 win over Northwestern State in the 2016 Bulldog Slamboree. It marked her first career start in the outfield across any level of competition in which she has played.
- The Rockville, Md., product was named Honorable Mention All-Big South in the outfield despite the lack of experience at the position.
- In addition, Kelly made nine starts during her rookie campaign at the hot corner at third base and has become Longwood's primary third baseman this season with seven starts at the hot corner.

Kelly 2017 Appearances by Position

Third Base.....	22
Left Field.....	12
Center Field.....	4
Shortstop.....	3

Kelly Career Appearances by Position

Left Field.....	49
Second Base.....	26
Third Base.....	29
Center Field.....	4
Shortstop.....	3
Catcher.....	2
Right Field.....	2
Designated Player.....	1

WINS AGAINST TOP COMPETITION

- Head coach Kathy Riley hasn't been shy about scheduling top competition throughout her tenure at Longwood. Riley has guided the Lancers to five victories against nationally-ranked competition in the school's nine seasons in the Division I era.
- Georgia is the highest ranked opponent the Lancers have defeated in the program's history. The Bulldogs were ranked No. 8 when the Lancers earned a 7-5 victory on March 11, 2011.

Wins Against Ranked Competition in D-1 Era

No. 25 NC State; April 13, 2015.....	W, 5-1
No. 25 Depaul; March 25, 2012.....	W, 4-1
No. 14 Hawaii; March 11, 2011.....	W, 1-0
No. 8 Georgia; May 11, 2011.....	W, 7-5
No. 13 Georgia; March 2, 2008.....	W, 2-1

2017 Season Honors

Elizabeth McCarthy

Big South Preseason Pitcher of the Year
Candidate for 2017 Senior CLASS Award

Kaylynn Batten

Big South Player of the Week - 2/27

Elizabeth McCarthy

Big South Pitcher of the Week - 4/10

2017 Big South Standings

School	Overall	Conference
1. Liberty	32-17	13-2
2. Campbell	26-21	11-4
3. Winthrop	22-25	7-8
4. Charleston So.	23-30	7-8
5. Longwood	16-25	5-7
6. Presbyterian	16-28	5-10
7. Gardner-Webb	12-28	5-10
8. Radford	22-20	4-8

*Standings as of 4/20

LANCERS TABBED TO 3-PEAT

- Longwood was picked to capture its third straight Big South Championship in five seasons by the league's head coaches. It marked the second straight season Longwood has been projected as the league champion.

2017 Big South Preseason Softball Poll

Team	2016 Record
1. Longwood (4)	40-20
2. Liberty (1)	31-28
3. Campbell (1)	28-31
4. Charleston Southern	22-34
5. Radford	35-26
6. Presbyterian	25-28
7. Winthrop (1)	15-43
8. Gardner-Webb	21-33

WHAT A TOURNAMENT

- Then-freshman Sydney Gay was fantastic in the circle for the Lancers in the 2016 Big South Tournament en route to capturing Big South Tournament MVP honors. Gay was 4-0 and didn't give up a single run in five appearances, three starts, while recording 24 strikeouts in 24.2 innings. She allowed opponents to hit just .131 off her. With Longwood facing elimination in the final four games of the tournament, Gay started three of those four games and pitched three complete-game shutouts.

PRESEASON ACCOLADES FOR MCCARTHY

- Pitcher Elizabeth McCarthy was named among the Big South's nine head coaches as the league's Preseason Pitcher of the Year. The junior southpaw picked up five of a possible eight first-place votes, as coaches were not allowed to vote for their own players.

SCHEDULING THE BEST

- Longwood has made a habit of scheduling some of the top teams in the nation.
- In 2017, the Lancers will play 21 games against teams that finished last season among the top-100 of the RPI rankings and 10 games against teams that advanced to the 2016 NCAA Regionals.
- Longwood's out-of-conference opponents amassed more than 600 wins a season ago and combined for a .579 win percentage.

#WOODYOUBELIEVE

- Longwood's mantra throughout the Big South Championship and the NCAA Tournament last season. #WoodYouBelieve can be seen throughout Longwood's social effort and following the Big South Tournament was the No. 7 trend on Twitter in the Richmond area.

TWO IS BETTER THAN ONE

- When it comes to the Longwood pitching staff, there is not a clear cut ace of the staff. Instead, the Lancers have co-aces in **Elizabeth McCarthy** and **Sydney Gay**.
- Together, McCarthy and Gay form the top pitching tandem in the Big South and one of the top duos in the nation. McCarthy has earned numerous accolades throughout her illustrious career, including being named two-time Big South Pitcher of the Year. McCarthy looks to cement her status as a Longwood great in 2017, as she is primed to break the school's strikeout record and is set to finish second in career wins. In addition, the Dunnsville, Va., product enters the season looking to finish among the top 10 all-time in Big South history in career punchouts.
- Meanwhile, Sydney Gay is coming off a fantastic freshman season where she was second-team All-Big South and posted the conference's only sub-2.00 ERA. The 2016 Big South Tournament MVP, Gay was among the top 10 among freshmen in the NCAA with her ERA and her 20 wins a season ago ranks fifth all-time on Longwood's single season wins chart.

2017 Big South Team ERA

	ERA
1. Longwood	2.90
2. Liberty	3.04
3. Winthrop	3.75
4. Radford	3.79
5. Gardner-Webb	3.93
6. Campbell	3.98
7. Charleston Southern	4.05
8. Presbyterian	4.14

**As of April 20, 2017*

Top Individual ERA's in Big South in 2017

Player, Team	ERA
1. Kenzie Friesen, Liberty	1.95
2. Julia Dimartino, Liberty	2.14
3. Stephanie Marlowe, Liberty	2.21
4. Sydney Gay, Longwood	2.46
5. Alex Cook, Presbyterian	2.83

**As of April 20, 2017*

WELCOME TO LONGWOOD

- Longwood signed six players in the early signing period, with five of the six players from the Commonwealth of Virginia.

Signees for 2018 Season

Individual	Hometown	Pos.
Sydney Backstrom	Huntersville, N.C.	P
Danielle Calloway	Evington, Va.	OF
Mallory Odell	Richmond, Va.	SS
Leah Powell	Stanardsville, Va.	UTL
Taylor Robinson	Louisa, Va.	SS/OF
Arleigh Wood	Tappahannock, Va.	P

Miscellaneous Stats

Overall Record	16-25
At Lancer Field	9-6
On the road	2-12
At a neutral site	5-7
Day Games	14-17
Night Games (after 5 p.m.)	2-8

Vs. top-10 opponent	0-1
Vs. ranked opponents	0-2
Vs. Unranked opponents	16-22
Vs. teams .500 or better	4-20
Vs. teams worse than .500	12-5

LWU after a win	8-8
LWU after a loss	7-16

LWU scores first	12-7
Scoring 3 or more runs	12-8
10 hits or more	4-2
Held without a home run	5-20
Hitting one home run	7-5
Hitting 2 or more home runs	4-0
Hold opponent without a home run	12-10
Allow one home run	3-10
Allow 2 or more home runs	1-5
Playing error free	8-3
Committing one error	4-12
Committing 2 or more errors	4-11

Leading after 5 innings	13-4
Trailing after 5 innings	2-15
Tied after 5 innings	1-4
Leading after 6 innings	14-2
Trailing after 6 innings	0-18
Tied after 6 Innings	1-2

In one-run games	6-9
In two-run games	3-3
Extra innings	2-1
Run-rule decisions	3-2
Shutouts	7-8

Vs. lefty starters	0-6
Vs. righty starters	16-19

Monthly Record

Longwood in February	5-8
Longwood in March	7-9
Longwood in April	4-8
Longwood in May	--

Days of the Week

On Monday	--
On Tuesday	2-2
On Wednesday	2-2
On Thursday	--
On Friday	2-6
On Saturday	5-12
On Sunday	5-3

Winning / Losing Streaks

Longest winning streak	4
Longest losing streak	6
Last 10 games	4-6
Last 15 games	7-8
Last 20 games	9-11
Current Streak	L 4

Pitching

McCarthy starts	5-9
Gay starts	11-14
Mundell starts	0-2
Carnes starts	--

Leading Off

Martinez leads off	7-10
Augustine leads off	4-8
Batten leads off	5-6
Kelly leads off	0-1

LONGWOOD SOFTBALL RETURNS TO WVHL, BIG SOUTH NETWORK

- Game of the Week coverage for the two-time reigning Big South champion softball team is set to start with the first game of Longwood's midweek doubleheader against Towson Wednesday, March 22. In addition, a rematch of Longwood's win against North Carolina (April 4) is set to hit the airwaves.
- Other games of note include Longwood's trip to Virginia Tech where the squad looks to extend its winning streak over the Hokies (April 11) to four straight, while the Lancers' trip to Liberty (April 26) in a late season matchup between Big South preseason No. 1 and No. 2. In addition, Longwood's Friday night home game against Presbyterian (April 14) can also be heard on WVHL.
- Fans will also have the opportunity to follow Longwood's quest for a third straight Big South Softball Championship, as the Lancers are set to host the tournament May 10-13 at Lancer Field.
- Longwood's Big South Network slate will open with softball's midweek doubleheader against Virginia March 28. The games against the Cavaliers will be the first of three home dates on the network, as BSN will also carry the squad's midweek doubleheader against East Carolina (April 19) and senior day against Charleston Southern (April 22).

LANCERS ON ESPN PLATFORMS

- Highlighted by Longwood softball's first-ever regular season appearance on ESPNU and the second straight season with a home ESPN3 game, the Longwood softball team will play three additional games throughout the regular season on ESPN platforms, as announced Thursday afternoon by the Big South.
- The first game of Longwood's Saturday, April 29 doubleheader at Radford will be broadcast live on ESPNU, marking the second time since joining the Big South that Longwood has had a game air on ESPNU.
- Additionally, the Lancers will square off against conference foe Presbyterian on ESPN3 Saturday, April 15 in a rematch of the 2015 Big South Championship game the Lancers won 4-0 en route to its second Big South Championship.
- After advancing past North Carolina in an epic nine inning 5-4 win to advance to the program's first-ever NCAA Regional Championship game, the two teams are scheduled for an April 4 rematch, as that contest against the Tar Heels in Chapel Hill, N.C., is scheduled to be broadcast on the ACC Network, which is available on WatchESPN/ESPN3.

LANCERS TO HOST BIG SOUTH TOURNEY

- The Longwood softball team has become a power within the Big South conference, winning three tournament titles in its first four seasons in the league, but the 2017 season will see the Lancers look to capture a third straight Big South Championship on their home field.
- Longwood is set to host the Big South Softball Championship May 10-13 at Lancer Field. The championship will be the first full postseason tournament hosted by the Lancers since becoming a Big South member prior to the 2012-13 academic year.

CHANGE OF FORMAT FOR BSC TOURNEY

- The Big South Tournament, hosted by Longwood May 10-13, will be a double-elimination tournament with the highest six seeds.

Series History

East Carolina leads all-time series, 6-4

March 29, 2016	W, 6-2
March 29, 2016	W, 8-2
March 7, 2015	W, 3-0
Feb. 7, 2015	L, 3-4
April 18, 2012	L, 2-5
April 18, 2012	L, 0-5
May 8, 2011	W, 3-0
May 7, 2011	L, 1-10
March 5, 2006	L, 1-5
April 9, 2005	L, 0-7



KATHY RILEY

Head Coach

24th Season (20th at Longwood)

East Carolina, '81

Career Record: 713-430-1 (23 Seasons)

Longwood Record: 634-363-1 (19 Seasons)

Longwood softball head coach Kathy Riley is set to begin her 20th season at the helm of the Lancer softball program in the 2016-17 season. Throughout her storied career, Riley has posted an overall coaching record of 712-430-1 while notching a 634-363-1 since taking over the Lancer softball program prior to the 1998 season, including a record of .500 or better in each of her 19 seasons.

Riley has thrust Longwood onto the national stage through the success of her softball program, taking the Lancers to three NCAA Regionals in 2013, 2015 and 2016 and winning the Big South Championship in all three of those seasons. Longwood has never posted a record below the .500 mark under Riley and reached 20 wins 18 times, 30 wins 11 times and 40 wins three times, including last year's 40-20 record that advanced to the program's first NCAA Regional Championship game.

Since Longwood has joined the Big South in 2012-13, Riley has coached two NFCA All-Americans, Megan Baltzell and Brooke Short, and has seen four players named to the NFCA All-Southeast Region team. In addition, Short (2013) and Baltzell (2015) have each been named Big South Female Athlete of the Year during Riley's tenure.

With every NCAA Tournament berth, Riley's teams have ventured closer to an NCAA Super Regional. In the program's historic first visit to an NCAA Regional in 2013, the Lancers suffered back-to-back losses for a quick exit from the Knoxville Regional. Longwood's next trip, which was a return to Knoxville in 2015, featured another historic first when the Lancers upset Commonwealth rival Virginia Tech for the school's first-ever Division I NCAA Tournament win. One year later, the Lancers earned victories against ACC foe North Carolina and Princeton at the Harrisonburg Regional on the same day to advance to the NCAA Regional Championship series against nationally-ranked James Madison.

Riley has won back-to-back Big South Coach of the Year awards, earning the honor in 2015 and 2016 during seasons in which the Lancers won both the Big South regular season and tournament championships in dominant fashion. Those two honors of two of four Coach of the Year honors for Riley, as she was named 1997 CVAC Coach of the Year while at Mount Olive and 2002 CVAC Coach of the Year at Longwood.

Last year, the Lancers reeled in a shower of awards, including Elizabeth McCarthy earning her second-straight Big South Pitcher of the Year honor and Sydney Gay being named the Big South Tournament MVP after pitching five consecutive games and not allowing a single run in 24.2 innings. Thanks to the pair of pitchers, Longwood's ERA ranked in the NCAA's top-20 by the end of the season.

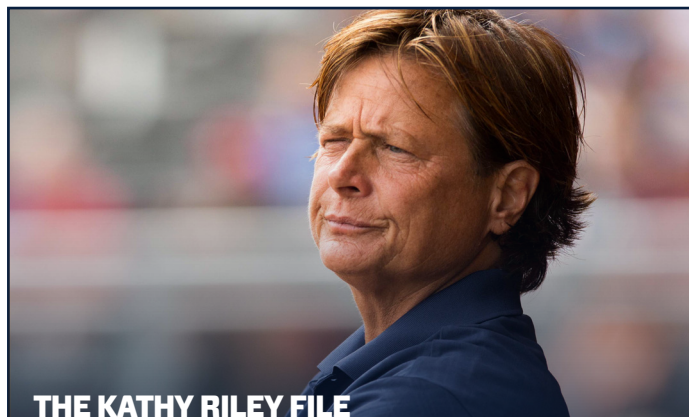
Under Riley's watch, Baltzell went from a little-known recruit to becoming the greatest player to don a Longwood uniform from the 2012-15 seasons. During Baltzell's time at Longwood, Riley coached her to 11 school records, four conference records -- despite being eligible in just her final three seasons that Longwood was a member of the league. In addition, Baltzell ended her Lancer career inside the top-10 in NCAA history in career home runs with 76, while ranking inside the top-three nationally in two of her four years.

Posting a 34-25 overall record, Riley's team enjoyed a historic 2015 season that saw the squad accomplish a number of firsts, including Riley earning her first Big South Coach of the Year honor. Behind a 20-4 regular season conference record, Longwood captured the school's first Big South Regular Season Title. The Lancers became the conference's second program to capture Coach of Year,

Player of the Year (Megan Baltzell) and Pitcher of the Year (Elizabeth McCarthy) in the same season. The Lancers went on to capture the program's second Big South Championship in a three-year span and entered the NCAA Tournament as one of the nation's hottest teams with a 14-game winning streak. Earning a bid into the Knoxville Regional, Longwood captured the school's first win in the NCAA Tournament on May 16, 2015, as the squad defeated Virginia Tech in eight innings.

Riley's squad posted the second of back-to-back seasons of 40+ wins in the spring of 2014, as Longwood notched a 40-16 overall record. Riley picked up her 600th career coaching victory on March 22 with a 3-0 home victory against Winthrop. Baltzell was named the Big South Player of the Year and was named to the NFCA All-Southeast Region Team. The squad had two 15-game winners, including McCarthy (20) and Libby Morris (17). Longwood entered the Big South Tournament as the No. 2 seed after posting a 17-6 mark in conference play during the regular season.

Riley guided the Lancers to a program-best 41-20 record in 2013, garnering her 500th coaching victory at Longwood with a 4-2 decision against Gardner-Webb on May 10, 2013. The team won its first-ever Big South Conference Championship and made its first



THE KATHY RILEY FILE

- Back-to-back Big South Coach of the Year
- A two-time CVAC Coach of the Year -- once at Mount Olive (1997) and once at Longwood (2002)
- Enters 24th season coaching and 14th season at Longwood
- Picked up her 700th win against George Washington earlier this season
- Has led Longwood to three Big South Championships, including back-to-back regular season crowns
- Led the Lancers to the 2016 NCAA Harrisonburg Regional Championship game

appearance at the Division I NCAA Regionals. The most successful and the longest tenured coach in the history of the Longwood program, Riley tutored three NFCA First-Team All-Southeast Region selections, as well as a pair of All-American honorees in 2013, as well. Her overall collegiate coaching record is 591-358-1, including four years at Mount Olive (N.C.) College.

The Lancers finished 2012 with a final record of 29-26, marking their 12th year with at least 25 wins under Riley. In 2011, Longwood compiled a final record of 37-13 and Riley was named the 2011 Virginia Sports Information Directors Association (VaSID) Coach of the Year for her efforts.

Longwood finished 36-16 during 2010 and 23-23 in 2009, the only non-winning season during Riley's tenure, though still a .500 effort. The Lancers finished 27-18 in 2008, following a 21-18 campaign in 2007 that completed the four-year Division I Reclassification. Longwood finished 27-19 in 2006 for its eighth-straight 25-win season, while in 2005, the Lancers were 32-20 for their fourth consecutive 30-win effort as Riley was named the 2005 Division I Independent Coach of the Year. It was also the program's first year playing a full Division I schedule.

Longwood was 37-13 in 2004 against a predominantly Division II schedule, its third-straight 37-win season. The Lancers finished 37-6 in 2003, claiming both the Carolinas-Virginia Athletic Conference (CVAC) regular season and CVAC Tournament Championships. Longwood made its second consecutive NCAA Regional Tournament appearance that year as well. The Lancers were 37-14 in 2002, winning the program's first CVAC Tournament Championship to earn their first NCAA Regional Tournament appearance with Riley garnering CVAC Coach of the Year honors.

Longwood finished 26-14-1 in 2001, following a 34-23 record in 2000 while finishing as CVAC Tournament runners-up. The Lancers compiled a school-record of 38-15 in 1999, while the program was 22-18 during Riley's first year in 1998.

Prior to Longwood, Riley served as head coach at Mount Olive from 1993-97, gaining CVAC Coach of the Year honors in 1997 and 1995. She coached volleyball as well and was the 1994 CVAC Coach of the Year in that sport. Before that, Riley coached basketball and softball at Goldsboro (N.C.) High School for one year following eight years with the Houston (Texas) Flames AAU women's basketball team that won two National

AAU Championships.

In addition to her coaching accomplishments, Riley has enjoyed quite a remarkable individual career in athletics. She was the 1981 Broderick Cup National Softball Player of the Year at East Carolina University, leading ECU to a No. 1 national ranking while garnering 1st-team All-America honors. Riley later played on the gold medal-winning team at the 1990 Olympic Sports Festival.

Riley is a member of the National Fastpitch Coaches Association (NFCA), and was inducted into the United States Specialty Sports Association (USSSA) Softball Hall of Fame on November 12, 1999. She received the 2000 USSSA DeBeer-Richard H. Pollak Memorial Outstanding Sportswoman of the Year award as well. Riley has played on five national champion softball teams during the summer months, gaining All-America honors seven times.

In basketball, Riley was a Street & Smith magazine preseason All-American and North Carolina Athlete of the Year in 1981. ECU was a top-20 program that year while advancing to the NCAA Tournament. She scored over 1,800 career points while at ECU and Middle Tennessee State University, and earned tryouts for the 1980 United States Olympic Women's Basketball Team and the 1978 Pan American Games team. Riley was a finalist for the 1980 Olympic team, and later played professionally with the Houston Shamrocks of the Women's American Basketball Association during 1983-84.

A native of Dayton, Ohio, Riley earned her Bachelor of Science degree in physical education from East Carolina in 1981 after a transfer from Middle Tennessee State in 1979. She earned her Master of Education degree in physical education: psychology/sociology from North Texas State University in 1982.



RILEY'S COACHING CAREER

MOUNT OLIVE (1993-97)

Head Coach

Year	Overall	Conference	Postseason
1994	n/a	n/a	n/a
1995	n/a	n/a	n/a
1996	28-26	n/a	n/a
1997	30-23	n/a	n/a
Overall (4)	79-67	n/a	n/a

LONGWOOD (1998-pres.)

Head Coach

Year	Overall	Conference	Postseason
1998	22-18	n/a	n/a
1999	38-15	n/a	n/a
2000	34-23	n/a	n/a
2001	26-14-1	n/a	n/a
2002	37-14	n/a	n/a
2003	37-6	n/a	n/a
2004	37-13	n/a	n/a
2005	32-20	n/a	n/a
2006	27-19	n/a	n/a
2007	21-18	n/a	n/a
2008	27-18	n/a	n/a
2009	23-23	n/a	n/a
2010	36-16	n/a	n/a
2011	37-13	n/a	n/a
2012	29-26	n/a	n/a
2013	41-20	16-8	0-2
2014	40-16	17-6	n/a
2015	34-25	20-4	1-2
2016	40-20	19-5	2-2
2017	16-25	5-7	0-0
Overall (20)	634-363-1	77-30	3-6

LONGWOOD GAMEDAY > Roster

NUMERICAL ROSTER

No.	Name	Cl.	Pos.	B/T	Ht.	Hometown / High School (Last School)
1	Kaylynn Batten	So.	C	R/R	5-3	Kenly, N.C. / North Johnston
2	Kelsey Sweeney	Jr.	1B	R/R	5-8	Newport News, Va. / Menchville
3	Elizabeth McCarthy	Sr.	LHP	L/L	5-11	Dunnsville, Va. / St. Margaret's
4	Sydney Gay	So.	RHP	R/R	5-8	Carrollton, Va. / Smithfield
6	Destiny Martinez	Fr.	2B	L/R	5-7	Yorktown, Va. / York
9	Jenna Carnes	Sr.	RHP	R/R	5-5	Six Mile, S.C. / D.W. Daniel
10	Karleigh Donovan	r-So.	3B	L/R	5-7	Dinwiddie, Va. / Dinwiddie
11	Haleigh Kilby	Jr.	3B	R/R	5-6	Nokesville, Va. / Brentsville District
12	Jordan Clark	So.	1B/OF	R/R	5-7	Midlothian, Va. / Manchester
15	Jessica Smith	So.	3B	R/R	5-2	Chesapeake, Va. / West Branch
18	Leanna Toler	Fr.	C / UT	R/R	5-2	Abingdon, Va. / Abingdon
19	Taylor Hedrick	Sr.	UT	R/R	5-7	Fredericksburg, Va. / Chancellor
20	Kasey Carr	Fr.	SS	R/R	5-6	Bedford, Va. / Liberty
21	Krista Kelly	Jr.	SS	R/R	5-4	Rockville, Md. / Our Lady of Good Counsel
24	Sydney Mundell	r-Jr.	RHP	R/R	5-8	Valencia, Calif. / Valencia / UNLV
40	Glenn Walters	Jr.	OF	L/L	5-7	Glen Allen, Va. / Glen Allen
55	Justina Augustine	Sr.	OF	R/R	5-7	Warrenton, Va. / Fauquier

ALPHABETICAL ROSTER

No.	Name	Cl.	Pos.	B/T	Ht.	Hometown / High School
55	Justina Augustine	Sr.	OF	R/R	5-7	Warrenton, Va. / Fauquier
1	Kaylynn Batten	So.	C	R/R	5-3	Kenly, N.C. / North Johnston
9	Jenna Carnes	Sr.	RHP	R/R	5-5	Six Mile, S.C. / D.W. Daniel
20	Kasey Carr	Fr.	SS	R/R	5-6	Bedford, Va. / Liberty
12	Jordan Clark	So.	1B/OF	R/R	5-7	Midlothian, Va. / Manchester
10	Karleigh Donovan	r-So.	3B	L/R	5-7	Dinwiddie, Va. / Dinwiddie
4	Sydney Gay	So.	RHP	R/R	5-8	Carrollton, Va. / Smithfield
19	Taylor Hedrick	Sr.	UT	R/R	5-7	Fredericksburg, Va. / Chancellor
21	Krista Kelly	Jr.	SS	R/R	5-4	Rockville, Md. / Our Lady of Good Counsel
11	Haleigh Kilby	Jr.	3B	R/R	5-6	Nokesville, Va. / Brentsville District
6	Destiny Martinez	Fr.	2B	L/R	5-7	Yorktown, Va. / York
3	Elizabeth McCarthy	Sr.	LHP	L/L	5-11	Dunnsville, Va. / St. Margaret's
24	Sydney Mundell	r-Jr.	RHP	R/R	5-8	Valencia, Calif. / Valencia / UNLV
15	Jessica Smith	So.	3B	R/R	5-2	Chesapeake, Va. / West Branch
2	Kelsey Sweeney	Jr.	1B	R/R	5-8	Newport News, Va. / Menchville
18	Leanna Toler	Fr.	C / UT	R/R	5-2	Abingdon, Va. / Abingdon
40	Glenn Walters	Jr.	OF	L/L	5-7	Glen Allen, Va. / Glen Allen

COACHING STAFF

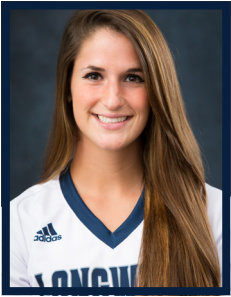
Name	Title	Year	Alma Mater
Kathy Riley	Head Coach	20th Season	East Carolina, '81
Kayla Miller	Assistant Coach	15th Season	Longwood, '07
Emily Murphy	Assistant Coach	First Season	Longwood, '16
Megan Baltzell	Volunteer Asst. Coach	First Season	Longwood, '15



LONGWOOD
LANCERS™

2017 LONGWOOD SOFTBALL SCHEDULE

Date	Opponent	Location	Venue	Time
February 10	Ohio	Columbia, S.C.	Carolina Softball Stadium	L, 5-0
February 11	Charlotte	Columbia, S.C.	Carolina Softball Stadium	L, 2-1
February 11	South Carolina	Columbia, S.C.	Carolina Softball Stadium	L, 1-0 (9)
February 12	Ohio	Columbia, S.C.	Carolina Softball Stadium	L, 5-0
February 17	Samford	Troy, Ala.	Troy Softball Complex	L, 8-5
February 17	Troy	Troy, Ala.	Troy Softball Complex	L, 5-4
February 18	Jacksonville	Troy, Ala.	Troy Softball Complex	W, 3-1
February 18	Troy	Troy, Ala.	Troy Softball Complex	L, 9-3
February 19	Samford	Troy, Ala.	Troy Softball Complex	W, 3-2 (8)
February 25	George Washington	Greensboro, N.C.	UNCG Softball Stadium	W, 4-3
February 25	UNCG	Greensboro, N.C.	UNCG Softball Stadium	L, 7-2
February 26	George Washington	Greensboro, N.C.	UNCG Softball Stadium	W, 11-2 (6)
February 26	UNCG	Greensboro, N.C.	UNCG Softball Stadium	W, 4-0
MARCH 4	HOFSTRA	FARMVILLE, VA.	LANCER FIELD	L, 4-1
MARCH 4	HOFSTRA	FARMVILLE, VA.	LANCER FIELD	L, 9-7
MARCH 5	HOFSTRA	FARMVILLE, VA.	LANCER FIELD	W, 2-0
March 10	Eastern Michigan	Long Beach, Calif.	LBSU Softball Complex	W, 8-1
March 10	UCLA	Long Beach, Calif.	LBSU Softball Complex	L, 8-0 (5)
March 11	San Diego State	Fullerton, Calif.	Anderson Family Field	L, 5-1
March 11	Cal State Fullerton	Fullerton, Calif.	Anderson Family Field	L, 2-1
March 12	Harvard	Long Beach, Calif.	LBSU Softball Complex	L, 3-2
March 18	*Campbell	Buies Creek, N.C.	Amanda Littlejohn Stadium	W, 7-6 (10)
March 18	*Campbell	Buies Creek, N.C.	Amanda Littlejohn Stadium	L, 10-9
March 19	*Campbell	Buies Creek, N.C.	Amanda Littlejohn Stadium	L, 9-2
MARCH 22	TOWSON	FARMVILLE, VA.	LANCER FIELD	W, 5-4
MARCH 22	TOWSON	FARMVILLE, VA.	LANCER FIELD	W, 8-2
MARCH 28	VIRGINIA	FARMVILLE, VA.	LANCER FIELD	W, 1-0
MARCH 28	VIRGINIA	FARMVILLE, VA.	LANCER FIELD	W, 2-1
March 31	*Winthrop	Rock Hill, S.C.	Terry Field	L, 1-0
April 1	*Winthrop	Rock Hill, S.C.	Terry Field	L, 5-4
April 1	*Winthrop	Rock Hill, S.C.	Terry Field	L, 3-2
April 4	North Carolina	Chapel Hill, N.C.	Anderson Softball Stadium	L, 5-3
APRIL 8	*GARDNER-WEBB (DH)	FARMVILLE, VA.	LANCER FIELD	W, 8-0 (6)
APRIL 8	*GARDNER-WEBB (DH)	FARMVILLE, VA.	LANCER FIELD	W, 8-0 (6)
APRIL 9	*GARDNER-WEBB	FARMVILLE, VA.	LANCER FIELD	W, 4-0
April 11	Virginia Tech	Blacksburg, Va.	Tech Softball Park	L, 5-2
APRIL 14	*PRESBYTERIAN	FARMVILLE, VA.	LANCER FIELD	W, 2-0
APRIL 14	*PRESBYTERIAN	FARMVILLE, VA.	LANCER FIELD	L, 2-0
APRIL 15	*PRESBYTERIAN	FARMVILLE, VA.	LANCER FIELD	L, 4-0
APRIL 19	EAST CAROLINA	FARMVILLE, VA.	LANCER FIELD	L, 8-0 (5)
APRIL 19	EAST CAROLINA	FARMVILLE, VA.	LANCER FIELD	L, 7-4
APRIL 22	*CHARLESTON SOUTHERN (DH)	FARMVILLE, VA.	LANCER FIELD	1 P.M.
APRIL 23	*CHARLESTON SOUTHERN	FARMVILLE, VA.	LANCER FIELD	1 P.M.
April 25	*Liberty (DH)	Lynchburg, Va.	Liberty Softball Stadium	5 p.m.
April 26	*Liberty	Lynchburg, Va.	Liberty Softball Stadium	5 p.m.
April 28	*Radford	Radford, Va.	Radford Softball Stadium	7 p.m.
April 29	*Radford (DH)	Radford, Va.	Radford Softball Stadium	3 p.m.
MAY 10-13	BIG SOUTH CHAMPIONSHIP	FARMVILLE, VA.	LANCER FIELD	TBD



55

Justina Augustine

Outfield | R-R | 5-7
Senior | Warrenton, Va.

Career Stats

SEASON	Avg	GP-GS	AB	R	H	2B	3B	HR	RBI	SLG%	BB	HBP	SO	GDP	OB%	SF	SH	SB	PO	A	E	FLD%
2014	.234	56-56	137	25	32	2	1	1	19	.285	19	5	25	0	.344	2	4	15	84	54	4	.972
2015	.298	55-50	171	48	51	13	2	7	23	.520	14	2	35	0	.358	0	2	11	60	11	3	.959
2016	.206	60-59	141	27	29	4	0	1	13	.255	16	4	19	0	.301	2	8	12	69	5	3	.961
2017	.256	41-41	117	12	30	6	0	0	7	.308	6	1	18	2	.298	0	4	7	56	12	3	.958
Total	.251	212-206	566	112	142	25	3	9	62	.353	55	12	97	2	.328	4	18	45	269	82	13	.964

Career Highs

At bats	5 (4x)	last at Campbell	03-18-17
Runs	3 (4x)	last at Radford	05-03-15
Hits	4	at Winthrop	03-21-15
RBI	3 (3x)	last vs. Gardner-Webb	04-10-14
Doubles	2 (3x)	last at Campbell	03-18-17
Triples	1 (2x)	last vs. Hampton	04-24-14
Home Runs	1 (9x)	last vs. Chattanooga	03-05-16
Walks	2 (3x)	last at East Carolina	03-29-16
Stolen Bases	2 (2x)	last at Radford	05-02-15

2017 Season Highs

At bats	5	at Campbell	03-18-17
Runs	2	vs. Gardner-Webb	04-08-17
Hits	3	vs. Gardner-Webb	04-08-17
RBI	2	vs. Hofstra	03-04-17
Doubles	2	at Campbell	03-18-17
Triples			
Home Runs			
Walks	1 (6x)	last vs ECU	04-19-17
Stolen Bases	1 (7x)	last vs ECU	04-19-17



9

Jenna Carnes

Right-Handed Pitcher | R-R | 5-5
Senior | Six Mile, S.C.

Career Stats

SEASON	ERA	W-L	App-GS	CG	SHO	SV	IP	H	R-ER	BB	SO	2B	3B	HR	BF	BAvg	WP	HBP	BK	SFA	SHA
2014	4.69	3-0	10-6	2	1	0	28.1	39	25-19	10	6	6	1	5	134	.328	1	0	0	2	3
2015	6.82	2-4	14-4	1	0	2	39.0	61	48-38	21	13	10	0	12	203	.345	4	2	0	3	0
2016	3.29	1-1	9-3	0	0	1	17.0	17	10-8	10	1	2	0	4	79	.258	0	1	0	0	2
2017	7.00	0-1	3-0	0	0	0	7.0	9	8-7	1	5	0	1	3	34	.281	1	1	0	0	0
Total	5.52	6-6	36-13	3	1	3	91.1	126	91-72	42	25	18	2	24	450	.320	6	4	0	5	5

Career Highs

IP	6.0	Rhode Island	03-08-14
Hits	12	at North Carolina	04-08-15
Runs Allowed	9	at North Carolina	04-08-15
ER Allowed	7	vs. Missouri	03-14-15
Ks	3	Rhode Island	03-08-14
BB	5	vs. San Jose St.	03-01-15
NP	91	at North Carolina	04-08-15

2017 Season Highs

IP	4.0	vs. Samford	02-17-17
Hits	6	vs. Samford	02-17-17
Runs Allowed	4	vs. Samford	02-17-17
ER Allowed	3	vs. Samford	02-17-17
Ks	2 (2x)	last vs. Samford	02-17-17
BB	1	at UNCG	02-25-17
NP	67	vs. Samford	02-17-17



19

Taylor Hedrick

Utility | R-R | 5-7
Senior | Fredericksburg, Va.

Career Stats

SEASON	Avg	GP-GS	AB	R	H	2B	3B	HR	RBI	SLG%	BB	HBP	SO	GDP	OB%	SF	SH	SB	PO	A	E	FLD%
2014	.193	48-41	114	15	22	6	1	2	18	.316	9	5	26	1	.281	0	4	2	41	37	13	.857
2015	.132	37-6	38	6	5	0	0	3	7	.368	2	0	7	0	.175	0	2	0	10	0	2	.833
2016	.188	23-6	32	3	6	1	0	0	5	.219	4	2	8	0	.308	1	1	0	1	0	0	1.000
2017	.000	1-0	1	0	0	0	0	0	0	.000	0	0	1	0	.000	0	0	0	0	0	0	.000
Total	.179	108-53	184	24	33	7	1	5	30	.310	15	7	41	1	.266	1	7	2	52	37	15	.856

Career Highs

At bats	4 (3x)	last at Presbyterian	03-30-14
Runs	2 (3x)	last vs. Winthrop	02-20-16
Hits	2 (3x)	last vs. Hartford	02-27-16
RBI	3	Hampton	04-10-14
Doubles	1 (7x)	last vs. Hartford	02-26-16
Triples	1	Liberty	03-20-14
Home Runs	1 (4x)	last vs. Charleston So.	04-45-15
Walks	2	vs. Winthrop	02-20-16
Stolen Bases	1 (2x)	last at Presbyterian	03-30-14

2017 Season Highs

At bats	1	vs. Ohio	02-10-17
Runs			
Hits			
RBI			
Doubles			
Triples			
Home Runs			
Walks			
Stolen Bases			



3

Elizabeth McCarthy

Left-Handed Pitcher | L-L | 5-11
Senior | Dunnsville, Va.

Career Stats

SEASON	ERA	W-L	App-GS	CG	SHO	SV	IP	H	R-ER	BB	SO	2B	3B	HR	BF	BAvg	WP	HBP	BK	SFA	SHA
2014	1.79	20-6	32-24	16	4	0	171.2	136	63-44	54	145	22	1	10	715	.215	10	10	0	1	18
2015	3.38	22-13	41-35	22	3	1	219.2	225	115-106	78	203	37	1	30	982	.263	9	26	3	7	17
2016	2.53	19-10	44-35	15	2	1	193.1	158	93-70	75	180	28	1	14	840	.220	12	25	5	5	17
2017	3.16	6-8	21-14	4	2	0	86.1	85	52-39	31	77	16	1	11	390	.250	3	9	4	3	7
Total	2.70	67-37	138-108	57	11	2	671	604	323-259	238	605	103	4	65	2927	.237	34	70	12	16	59

Career Highs

IP	8.0 (6x)	last at East Carolina	03-29-16
Hits	14	Presbyterian	03-28-15
Runs Allowed	10	Presbyterian	03-28-15
Earned Runs Allowed	10	Presbyterian	03-28-15
Ks	12 (2x)	last vs. Radford	04-30-16
BB	7	vs. San Jose St.	02-27-15
NP	171	Presbyterian	03-28-15

2017 Season Highs

IP	7.0 (2x)	last vs. Presbyterian	04-14-17
Hits	9	at Winthrop	04-01-17
Runs Allowed	8	vs ECU	04-19-17
ER Allowed	7	at Troy	02-18-17
Ks	11	vs. Virginia	03-28-17
BB	4	vs. Ohio	02-10-17
NP	106	vs. Virginia	03-28-17

PLAYER BIOS



21

Krista Kelly

Catcher / Infield | R-R | 5-4
Junior | Rockville, Md.

Career Stats

SEASON	Avg	GP-GS	AB	R	H	2B	3B	HR	RBI	SLG%	BB	HBP	SO	GDP	OB%	SF	SH	SB	PO	A	E	FLD%
2015	.218	38-19	55	10	12	2	0	0	6	.255	6	0	5	0	.295	0	0	5	28	26	7	.885
2016	.277	57-57	155	22	43	7	2	0	21	.348	21	1	12	0	.359	4	7	7	78	20	1	.990
2017	.192	41-41	120	16	23	7	0	2	15	.300	11	0	12	0	.258	1	9	6	54	46	6	.943
Total	.236	136-117	330	48	78	16	2	2	42	.315	38	1	29	0	.313	5	16	18	160	92	14	.947

Career Highs

At bats	4 (10x)	last vs. ECU	04-19-17
Runs	2 (7x)	last vs Towson	03-22-17
Hits	3	at Charleston So.	03-25-16
RBI	5	vs. George Washington	02-26-17
Doubles	2 (3x)	last vs. North Carolina	05-21-16
Triples	1	at Charleston So.	03-25-16
Home Runs	1(2x)	last vs. Hofstra	03-04-17
Walks	2 (3x)	last vs. Princeton	05-21-16
Stolen Bases	2 (4x)	last vs. Gardner-Webb	04-08-17

2017 Season Highs

At bats	4 (10x)	last vs ECU	04-19-17
Runs	2(2x)	last vs Towson	03-22-17
Hits	3	at Winthrop	04-01-17
RBI	5	vs. George Washington	02-26-17
Doubles	1 (7x)	last vs Towson	03-22-17
Triples			
Home Runs	1(2x)	last vs. Hofstra	03-04-17
Walks	1 (11x)	last vs Towson	03-22-17
Stolen Bases	2	vs. Gardner-Webb	04-08-17



11

Haleigh Kilby

Third Base | R-R | 5-6
Junior | Nokesville, Va.

Career Stats

SEASON	Avg	GP-GS	AB	R	H	2B	3B	HR	RBI	SLG%	BB	HBP	SO	GDP	OB%	SF	SH	SB	PO	A	E	FLD%
2015	.216	38-23	74	8	16	1	0	1	5	.270	12	1	14	0	.333	0	1	0	17	38	4	.932
2016	.188	25-10	32	7	6	1	0	0	2	.219	4	1	7	0	.297	0	4	2	9	9	5	.783
2017	.179	22-7	28	4	5	1	0	0	1	.214	5	0	9	0	.303	0	1	3	13	7	2	.909
Total	.201	85-40	134	19	27	3	0	1	8	.246	21	2	30	0	.318	0	6	5	39	54	11	.894

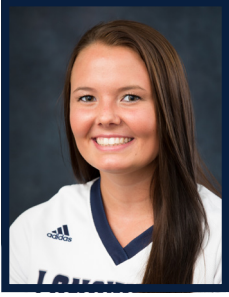
Career Bests

At bats	4 (5x)	last vs. Presbyterian	03-21-15
Runs	2 (2x)	last vs. Winthrop	02-20-16
Hits	3	vs. Utah	03-05-15
RBI	1 (7x)	last vs. George Washington	02-26-17
Doubles	1 (3x)	last vs. Presbyterian	04-15-17
Triples			
Home Runs	1	vs. Binghamton	03-13-15
Walks	2 (3x)	last at Campbell	04-03-15
Stolen Bases	1 (5x)	last at Campbell	03-18-17

2017 Season Highs

At bats	3(3x)	last vs ECU	04-19-17
Runs	1(4x)	last vs Gardner-Webb	04-08-17
Hits	1 (5x)	last vs Presbyterian	04-15-17
RBI	1	vs. George Washington	02-26-17
Doubles	1	vs. Presbyterian	04-15-17
Triples			
Home Runs			
Walks	1(6x)	last vs Gardner-Webb	04-08-17
Stolen Bases	1(3x)	last vs. Campbell	03-18-17

PLAYER BIOS > Juniors & Sophomores



2

Kelsey Sweeney

First Base | R-R | 5-8
Junior | Newport News, Va.

Career Stats

SEASON	Avg	GP-GS	AB	R	H	2B	3B	HR	RBI	SLG%	BB	HBP	SO	GDP	OB%	SF	SH	SB	PO	A	E	FLD%
2015	.301	48-33	113	9	34	2	1	4	24	.442	9	2	30	0	.357	2	5	0	135	3	2	.986
2016	.305	50-46	131	15	40	7	0	7	29	.519	9	0	29	0	.350	0	2	0	62	5	5	.931
2017	.225	36-35	102	8	23	6	1	2	13	.363	6	2	16	0	.282	0	4	1	179	5	4	.979
Total	.280	134-114	346	32	97	15	2	13	66	.448	24	4	75	0	.332	2	11	1	376	13	11	.973

Career Highs

At bats	5	at Campbell	03-18-17
Runs	2 (6x)	last at Campbell	03-18-17
Hits	3 (2x)	last at Troy	02-17-17
RBI	4	at Campbell	04-04-15
Doubles	1 (11x)	last vs Gardner-Webb	04-08-17
Triples	1	at Liberty	03-31-15
Home Runs	1 (12x)	last vs. Jacksonville	02-18-17
Walks	3	at Winthrop	03-21-15
Stolen Bases	1	at Campbell	03-18-17

2017 Season Highs

At bats	5	at Campbell	03-18-17
Runs	2(2x)	last at Campbell	03-18-17
Hits	3(2x)	last at Campbell	03-18-17
RBI	2(4x)	last vs Gardner-Webb	04-08-17
Doubles	1(6x)	last vs Gardner-Webb	04-08-17
Triples	1	at Winthrop	04-01-17
Home Runs	1	vs. Jacksonville	02-18-17
Walks	1(6x)	last at Virginia Tech	04-11-17
Stolen Bases	1	at Campbell	03-18-17



40

Glenn Walters

Outfield | L-L | 5-7
Junior | Glenn Allen, Va.

Career Stats

SEASON	Avg	GP-GS	AB	R	H	2B	3B	HR	RBI	SLG%	BB	HBP	SO	GDP	OB%	SF	SH	SB	PO	A	E	FLD%
2015	.270	54-44	111	30	30	3	1	8	19	.532	24	7	44	0	.430	0	0	12	49	3	1	.981
2016	.273	60-60	165	42	45	10	3	9	31	.533	31	10	52	0	.415	1	3	18	70	1	2	.973
2017	.203	36-33	79	18	16	5	0	5	12	.456	18	7	22	0	.390	1	2	4	48	3	3	.944
Total	.256	150-137	355	90	91	18	4	22	62	.515	73	24	118	0	.414	2	5	34	167	7	6	.967

Career Highs

At bats	5	vs. Chattanooga	03-05-16
Runs	3	vs. Hartford	02-28-16
Hits	3 (2x)	last at Radford	05-02-15
RBI	3 (4x)	last vs. Campbell	05-14-16
Doubles	1 (17x)	last at UNC	04-04-17
Triples	1 (4x)	last vs. Liberty	04-06-16
Home Runs	2	last vs. Campbell	05-14-16
Walks	3	last at Liberty	03-31-15
Stolen Bases	2 (3x)	vs. Hartford	02-26-16

2017 Season Highs

At bats	4	at Troy	02-18-17
Runs	2	at UNC	04-04-17
Hits	2(2x)	last at Campbell	03-18-17
RBI	2 (3x)	last vs Gardner-Webb	04-08-17
Doubles	1(5x)	last at UNC	04-04-17
Triples			
Home Runs	1(5x)	last vs Gardner-Webb	04-08-17
Walks	2(4x)	last vs Gardner-Webb	04-08-17
Stolen Bases	1 (3x)	last at Winthrop	04-01-17

PLAYER BIOS



24

Sydney Mundell

Right-Handed Pitcher | R-R | 5-8

RS Junior | Valencia, Calif.

Career Stats

SEASON	ERA	W-L	App-GS	CG	SHO	SV	IP	H	R-ER	BB	SO	2B	3B	HR	BF	BAvg	WP	HBP	BK	SFA	SHA
2016	2.27	0-1	10-0	0	0	0	12.1	17	6-4	4	9	2	0	0	59	.327	2	1	0	1	1
2017	3.26	0-2	15-2	0	0	1	34.1	40	27-16	14	15	6	0	3	167	.267	1	2	0	1	0
Total	3.00	0-3	25-2	0	0	1	46.2	57	33-20	18	24	8	0	3	226	.282	3	3	0	2	1

Career Highs (Longwood Only)

IP	5.0 (2x)	last vs ECU	04-19-17
Hits	9	vs ECU	04-19-17
Runs Allowed	7 (2x)	last vs ECU	04-19-17
ER Allowed	7	vs ECU	04-19-17
Ks	4	at Campbell	03-18-17
BB	3 (2x)	last vs ECU	04-19-17
NP	101	at Campbell	03-18-17

2017 Season Highs

IP	5.0 (2x)	last vs ECU	04-19-17
Hits	9	vs ECU	04-19-17
Runs Allowed	7 (2x)	last vs ECU	04-19-17
ER Allowed	7	vs ECU	04-19-17
Ks	4	at Campbell	03-18-17
BB	3 (2x)	last vs ECU	04-19-17
NP	101	at Campbell	03-18-17



10

KARLEIGH DONOVAN

Third Base | L-R | 5-7

RS Sophomore | Dinwiddie, Va.

Career Stats

SEASON	Avg	GP-GS	AB	R	H	2B	3B	HR	RBI	SLG%	BB	HBP	SO	GDP	OB%	SF	SH	SB	PO	A	E	FLD%
2016	.333	52-49	138	16	46	6	2	7	27	.558	9	6	20	1	.396	1	4	1	29	31	9	.870
2017	.263	39-39	114	14	30	8	1	1	12	.377	8	5	18	0	.336	1	1	1	38	22	5	.923
Total	.302	91-88	252	30	76	14	3	8	39	.476	17	11	38	1	.369	2	5	2	67	53	14	.896

Career Highs

At bats	4 (14x)	last at Winthrop	04-01-17
Runs	3	vs. Hofstra	03-04-17
Hits	3	vs. Hofstra	03-04-17
RBI	3 (3x)	last vs Eastern Michigan	03-10-17
Doubles	2	vs. Cal State Fullerton	03-11-17
Triples	1 (3x)	last vs. Eastern Michigan	03-10-17
Home Runs	1 (8x)	last vs. Samford	02-19-17
Walks	2	vs. Winthrop	02-20-16
Stolen Bases	1 (2x)	vs. Jacksonville	02-18-17

2017 Season Highs

At bats	4 (8x)	last at Winthrop	04-01-17
Runs	3	vs. Hofstra	03-04-17
Hits	3	vs. Hofstra	03-04-17
RBI	3	vs. Eastern Michigan	03-10-17
Doubles	2	vs. Cal State Fullerton	03-11-17
Triples	1	vs. Eastern Michigan	03-10-17
Home Runs	1	vs. Samford	02-19-17
Walks	1 (8x)	last vs Virginia	03-28-17
Stolen Bases	1	vs. Jacksonville	02-18-17



1

Kaylynn Batten

Catcher | R-R | 5-3
Sophomore | Kenly, N.C.

Career Stats

SEASON	Avg	GP-GS	AB	R	H	2B	3B	HR	RBI	SLG%	BB	HBP	SO	GDP	OB%	SF	SH	SB	PO	A	E	FLD%
2016	.292	60-59	168	20	49	9	1	2	32	.393	29	1	17	0	.397	1	0	4	379	33	6	.986
2017	.283	41-41	120	16	34	7	0	3	18	.417	25	0	12	0	.407	0	1	3	224	12	3	.987
Total	.288	101-100	288	36	83	16	1	5	50	.403	54	1	29	0	.401	1	1	7	603	45	9	.986

Career Highs

At bats	5	last vs. North Carolina	05-21-16
Runs	2 (5x)	last vs. Gardner-Webb	04-08-17
Hits	3	vs. Hartford	02-26-16
RBI	4(2x)	last vs. Gardner-Webb	04-08-17
Doubles	1 (16x)	last vs Presbyterian	04-15-17
Triples	1	vs. North Carolina	05-21-16
Home Runs	2	vs. Gardner-Webb	04-08-17
Walks	2 (10x)	last vs Towson	03-22-17
Stolen Bases	1 (7x)	last at Campbell	03-18-17

2017 Season Highs

At bats	4(11x)	last vs ECU	04-19-17
Runs	2 (3x)	last vs. Gardner-Webb	04-08-17
Hits	2 (10x)	last vs. Presbyterian	04-15-17
RBI	4	vs Gardner-Webb	04-08-17
Doubles	1 (7x)	last vs Presbyterian	04-15-17
Triples			
Home Runs	2	vs Gardner-Webb	04-08-17
Walks	2 (7x)	last vs Towson	03-22-17
Stolen Bases	1 (3x)	last at Campbell	03-18-17



12

Jordan Clark

First Base/Outfield | R-R | 5-7
Sophomore | Midlothian, Va.

Career Stats

SEASON	Avg	GP-GS	AB	R	H	2B	3B	HR	RBI	SLG%	BB	HBP	SO	GDP	OB%	SF	SH	SB	PO	A	E	FLD%
2016	.286	28-8	21	11	6	2	0	0	4	.381	3	0	5	0	.375	0	0	5	11	2	0	1.000
2017	.283	36-34	99	7	28	3	1	2	19	.394	4	5	17	2	.339	1	1	1	35	0	2	.946
Total	.283	64-42	120	18	34	5	1	2	23	.392	7	5	22	2	.346	1	1	6	46	2	2	.960

Career Highs

At bats	5	at Campbell	03-18-17
Runs	2(2x)	last vs. Towson	03-22-17
Hits	3	vs. Towson	03-22-17
RBI	4	vs. Towson	03-22-17
Doubles	1 (4x)	last at Virginia Tech	04-11-17
Triples	1	vs. Harvard	03-12-17
Home Runs	1 (2x)	last at UNC	04-04-17
Walks	1 (6x)	last at Virginia Tech	04-11-17
Stolen Bases	1 (6x)	last at Campbell	03-18-17

2017 Season Highs

At bats	5	at Campbell	03-18-17
Runs	2(2x)	last vs. Towson	03-22-17
Hits	3	vs. Towson	03-22-17
RBI	4	vs. Towson	03-22-17
Doubles	1(3x)	last at Virginia Tech	04-11-17
Triples	1	vs. Harvard	03-12-17
Home Runs	1 (2x)	last at UNC	04-04-17
Walks	1 (4x)	last at Virginia Tech	04-11-17
Stolen Bases	1	at Campbell	03-18-17

PLAYER BIOS



4

Sydney Gay

Right-Handed Pitcher | R-R | 5-3

Sophomore | Carrollton, Va.

Career Stats

SEASON	ERA	W-L	App-GS	CG	SHO	SV	IP	H	R-ER	BB	SO	2B	3B	HR	BF	BAvg	WP	HBP	BK	SFA	SHA
2016	1.93	20-8	37-22	14	5	1	178.0	117	53-49	76	176	12	4	15	731	.186	5	11	0	3	12
2017	2.46	10-12	27-25	14	3	1	145.0	128	67-51	44	108	18	1	10	628	.229	1	13	0	3	8
Total	2.17	30-20	64-47	28	8	2	323	245	120-100	120	284	30	5	25	1359	.206	6	24	0	6	20

Career Highs

IP	8.0	at South Carolina	02-19-17
Hits	13	at Campbell	03-18-17
Runs Allowed	9	at Campbell	03-18-17
ER Allowed	7	at Coastal Carolina	05-07-16
Ks	13	at Gardner-Webb	04-16-16
BB	7	at Auburn	04-10-16
NP	143	vs. Central Arkansas	03-04-16

2017 Season Highs

IP	8.0	at South Carolina	02-19-17
Hits	13	at Campbell	03-18-17
Runs Allowed	9	at Campbell	03-19-17
ER Allowed	5(2x)	last at Campbell	03-18-17
Ks	7 (3x)	last vs. Hofstra	03-04-17
BB	4(2x)	last at Campbell	03-19-17
NP	116	at Campbell	03-19-17



15

Jessica Smith

Third Base | R-R | 5-2

Sophomore | Chesapeake, Va.

Career Stats

SEASON	Avg	GP-GS	AB	R	H	2B	3B	HR	RBI	SLG%	BB	HBP	SO	GDP	OB%	SF	SH	SB	PO	A	E	FLD%
2016	.205	39-15	44	14	9	1	0	1	3	.295	3	0	5	0	.255	0	1	2	22	16	0	1.000
2017	.214	30-22	56	13	12	1	0	3	7	.393	0	0	15	0	.214	0	3	1	28	13	3	.932
Total	.210	69-37	100	27	21	2	0	4	10	.350	3	0	20	0	.233	0	4	3	50	29	3	.963

Career Highs

At bats	3 (13x)	last vs ECU	04-19-17
Runs	2(2x)	last vs. Towson	03-22-17
Hits	2(2x)	last vs. Towson	03-22-17
RBI	1 (8x)	last vs ECU	04-19-17
Doubles	1 (2x)	last vs. George Washington	02-26-17
Triples			
Home Runs	1 (4x)	last vs. ECU	04-19-17
Walks	1 (3x)	last vs. North Carolina	05-21-16
Stolen Bases	1(2x)	last vs. Gardner-Webb	04-08-17

2017 Season Highs

At bats	3 (8x)	last vs ECU	04-19-17
Runs	2	vs. Towson	03-22-17
Hits	2	vs. Towson	03-22-17
RBI	1 (5x)	last vs ECU	04-19-17
Doubles	1	vs. George Washington	02-26-17
Triples			
Home Runs	1(3x)	last vs ECU	04-19-17
Walks			
Stolen Bases	1	vs. Gardner-Webb	04-08-17



20 **KASEY CARR**
 Shortstop | R-R | 5-6
 Freshman | Bedford, Va.

Career Stats

SEASON	Avg	GP-GS	AB	R	H	2B	3B	HR	RBI	SLG%	BB	HBP	SO	GDP	OB%	SF	SH	SB	PO	A	E	FLD%
2017	.159	33-32	63	9	10	2	0	1	4	.238	14	1	11	0	.321	0	5	1	78	43	10	.924
Total	.159	33-32	63	9	10	2	0	1	4	.238	14	1	11	0	.321	0	5	1	78	43	10	.924

Career Highs

At bats	4(2x)	last at Campbell	03-18-17
Runs	2	at Campbell	03-18-17
Hits	3	at Campbell	03-18-17
RBI	2	vs. George Washington	02-25-17
Doubles	1(2x)	last at Campbell	03-18-17
Home Runs	1	vs. Eastern Michigan	03-10-17
Walks	2	vs. Harvard	03-12-17
Stolen Bases	1	at Campbell	03-18-17

2017 Season Highs

At bats	4(2x)	last at Campbell	03-18-17
Runs	2	at Campbell	03-18-17
Hits	3	at Campbell	03-18-17
RBI	2	vs. George Washington	02-25-17
Doubles	1(2x)	last at Campbell	03-18-17
Home Runs	1	vs. Eastern Michigan	03-10-17
Walks	2	vs. Harvard	03-12-17
Stolen Bases	1	at Campbell	03-18-17



6 **DESTINY MARTINEZ**
 Second Base | L-R | 5-7
 Freshman | Yorktown, Va.

Career Stats

SEASON	Avg	GP-GS	AB	R	H	2B	3B	HR	RBI	SLG%	BB	HBP	SO	GDP	OB%	SF	SH	SB	PO	A	E	FLD%
2017	.205	33-31	78	11	16	0	0	0	1	.205	12	2	19	0	.326	0	1	9	49	35	5	.944
Total	.205	33-31	78	11	16	0	0	0	1	.205	12	2	19	0	.326	0	1	9	49	35	5	.944

Career Highs

At bats	5	at Troy	02-17-17
Runs	2	vs. Eastern Michigan	03-10-17
Hits	3	at Troy	02-17-17
RBI	1	vs. Hofstra	03-04-17
Doubles			
Home Runs			
Walks	2 (2x)	last at UNCG	02-25-17
Stolen Bases	2	vs. Eastern Michigan	03-10-17

2017 Season Highs

At bats	5	at Troy	02-17-17
Runs	2	vs. Eastern Michigan	03-10-17
Hits	3	at Troy	02-17-17
RBI	1	vs. Hofstra	03-04-17
Doubles			
Home Runs			
Walks	2 (2x)	last at UNCG	02-25-17
Stolen Bases	2	vs. Eastern Michigan	03-10-17



18

LEANNA TOLER

**Catcher/Utility | R-R | 5-2
Freshman | Abingdon, Va.**

Career Stats

SEASON	Avg	GP-GS	AB	R	H	2B	3B	HR	RBI	SLG%	BB	HBP	SO	GDP	OB%	SF	SH	SB	PO	A	E	FLD%
2017	.143	25-7	21	3	3	0	1	0	1	.238	3	0	5	1	.250	0	0	1	0	1	0	1.000
Total	.143	25-7	21	3	3	0	1	0	1	.238	3	0	5	1	.250	0	0	1	0	1	0	1.000

Career Highs

At bats	3 (3x)	last vs Virginia	03-28-17
Runs	1(4x)	last vs Presbyterian	04-14-17
Hits	1(3x)	last vs. Virginia	03-28-17
RBI	1	at Troy	02-18-17
Doubles			
Triples	1	vs. San Diego State	03-11-17
Home Runs			
Walks	1(3x)	last vs ECU	04-19-17
Stolen Bases	1	at Winthrop	03-31-17

2017 Season Highs

At bats	3 (3x)	last vs Virginia	03-28-17
Runs	1(4x)	last vs Presbyterian	04-14-17
Hits	1(4x)	last vs. Gardner-Webb	04-09-17
RBI	1	at Troy	02-18-17
Doubles			
Triples	1	vs. San Diego State	03-11-17
Home Runs			
Walks	1(3x)	last vs ECU	04-19-17
Stolen Bases	1	at Winthrop	03-31-17

